

# SHINTOTEX®

## ADVANCED SYNTHETIC FIBRES

**SHINTOTEX®** es la nueva fibra sintética para muebles de exterior, inspirada en la naturaleza y perfeccionada técnicamente hasta alcanzar el máximo nivel de confort, funcionalidad y durabilidad.

### CARACTERÍSTICAS TÉCNICAS:

- Resistencia a cambios climatológicos
- Resistencia a agentes químicos abrasivos
- Resistencia a rotura y deterioro por el uso
- Alta flexibilidad
- Total reciclaje

### CARACTERÍSTICAS ESTÉTICAS:

- Calidez y apariencia natural
- Tacto agradable
- Variedad de texturas y trenzados
- Fácil limpieza
- Mayor ligereza

**SHINTOTEX®** is a new synthetic fibre for outdoor furniture, inspired by nature and perfected by technology to achieve maximum comfort, functionality and durability.

### TECHNICAL FEATURES:

- Resistant to weather changes
- resistant to abrasive chemical agents
- resistant to breackage and wear & tear
- highly flexible
- fully recyclable

### AESTHETICAL FEATURES:

- Warmth and nature appearance
- pleasant to the touch
- variety of textures and braids
- easy to clean
- lighter



**MARFIL 36 / IVORY 36** FLAT 9 MM



**TOSTADO 03 / TOASTED 03** FLAT 9 MM



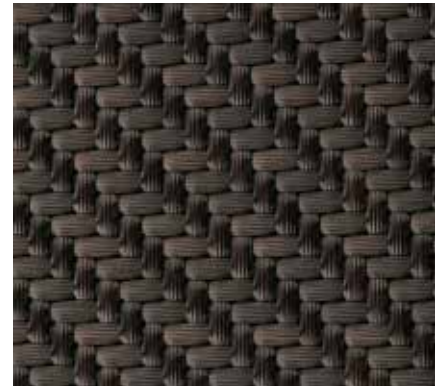
**DARK 59**



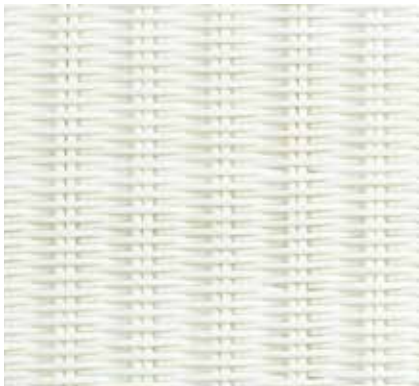
**MARFIL 36 / IVORY 36** FLAT OVAL 6 MM



**TOSTADO 03 / TOASTED 03** FLAT OVAL 6 MM



**DARK 59**



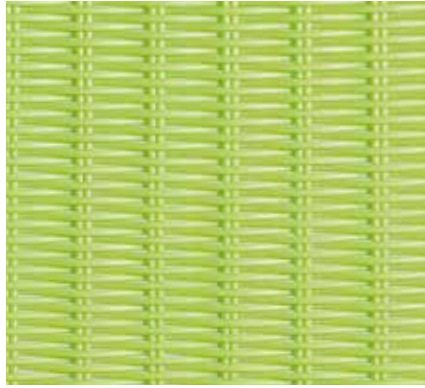
**MARFIL 36 / IVORY 36** ROUND 3-4 MM



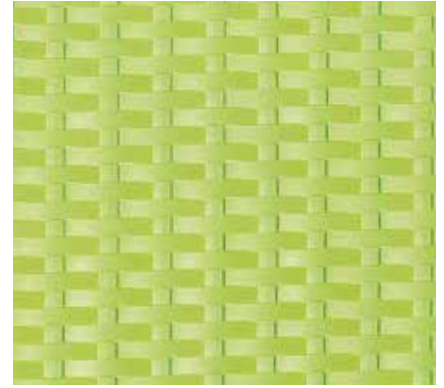
**TOSTADO 03 / TOASTED 03** ROUND 3-4 MM



**DARK 59**



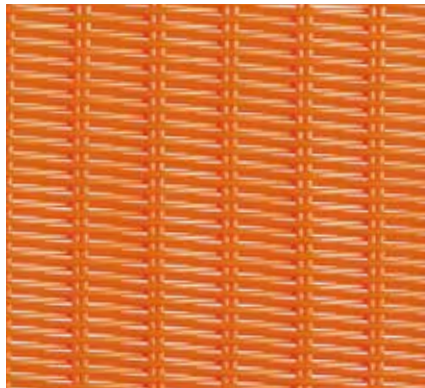
**VERDE 07 / GREEN 07** ROUND 2,5 MM



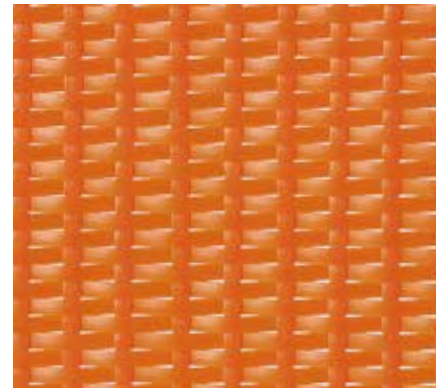
**VERDE 07 / GREEN 07** FLAT 7 MM



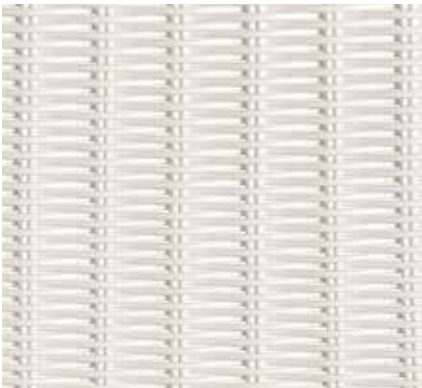
**CALETA 36** FLAT 30 MM



**NARANJA 05 / ORANGE 05** ROUND 2,5 MM



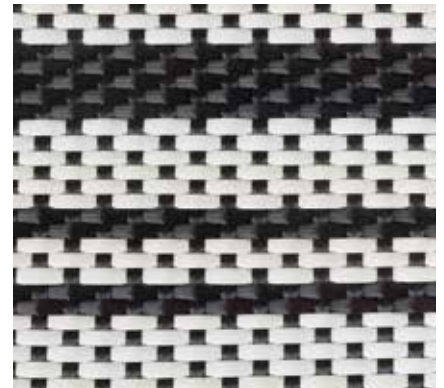
**NARANJA 05 / ORANGE 05**



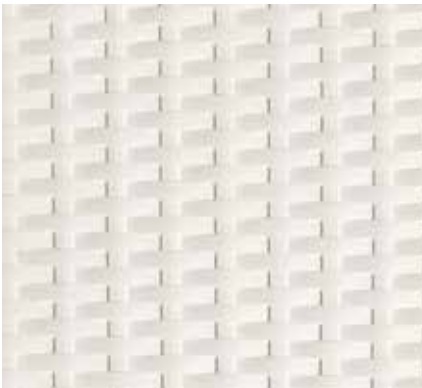
**BLANCO 35 / WHITE 35** ROUND 2,5 MM



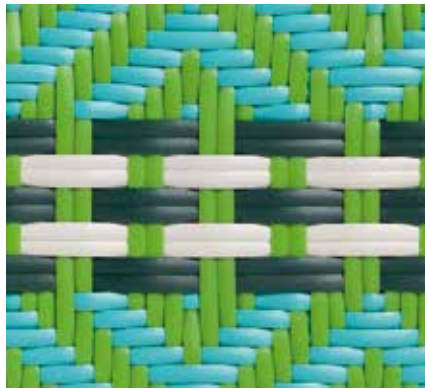
**BLANCO + GRIS 36 / WHITE + GREY 36** FLAT 7 MM



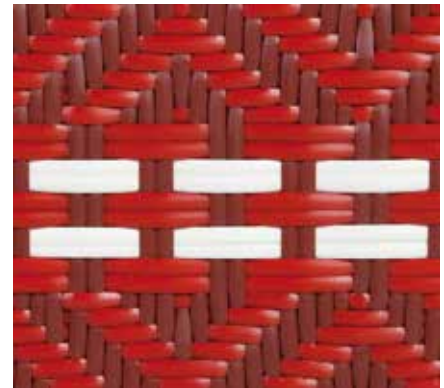
**DARK + BLANCO 59 / DARK + WHITE 59** FLAT 7 MM



**BLANCO 35 / WHITE 35** FLAT 7 MM



**VERDE ICPALLI / GREEN ICPALLI 09** FLAT 7 MM



**ROJO ICPALLI / RED ICPALLI 08**